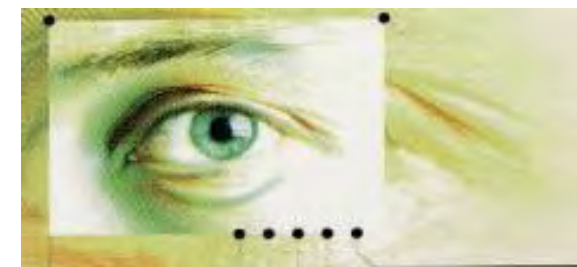
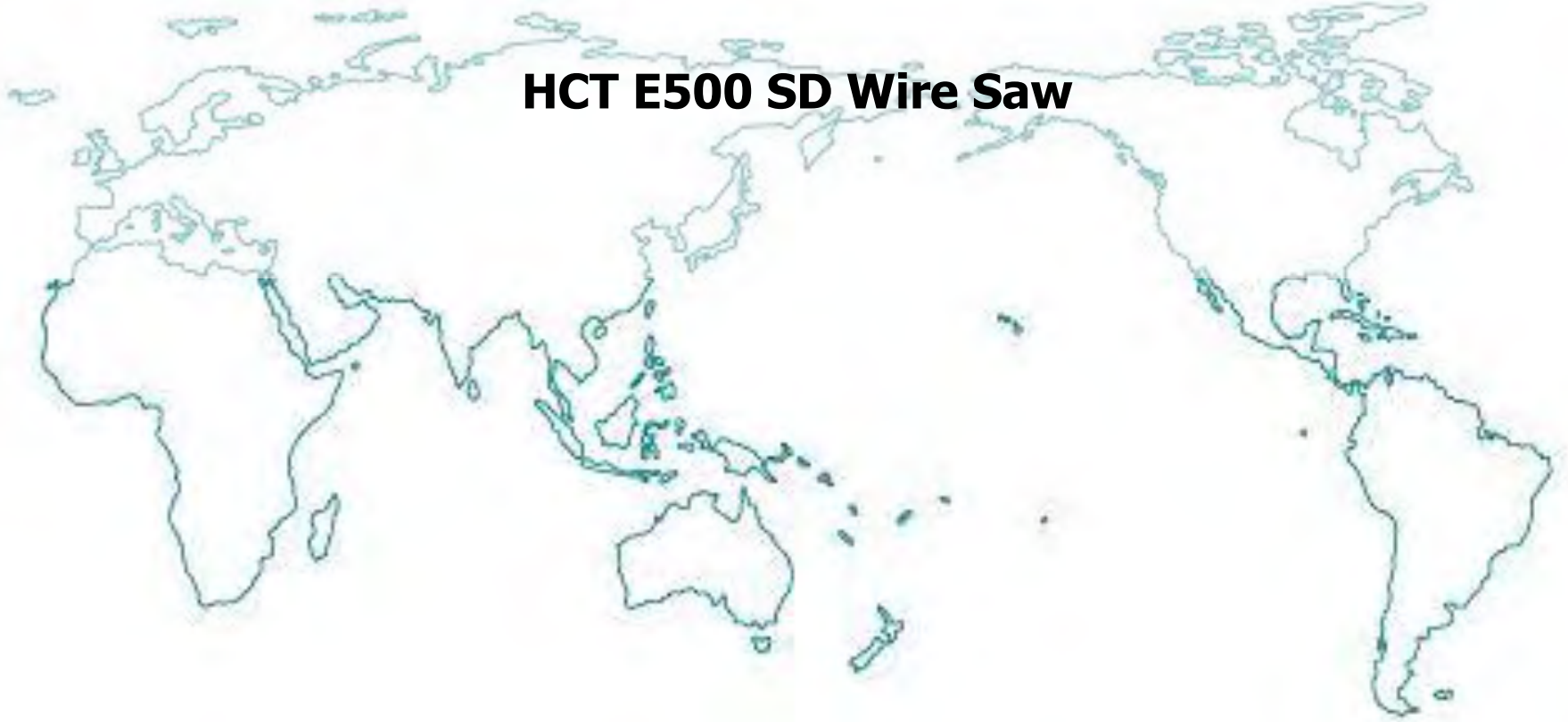


HCT E500 SD Wire Saw



Fab-Finder, Inc.
We locate and provide the fab equipment you require

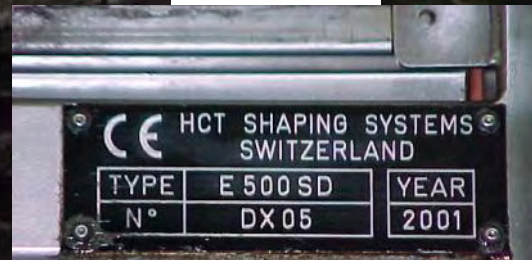
4 October 2011



Fab-Finder, Inc. We locate and provide the fab equipment you require

HCT WiresawE500SD-S #61

1,8 inch ingot, 2, 6 inch ingots, 4, 5 inch ingots

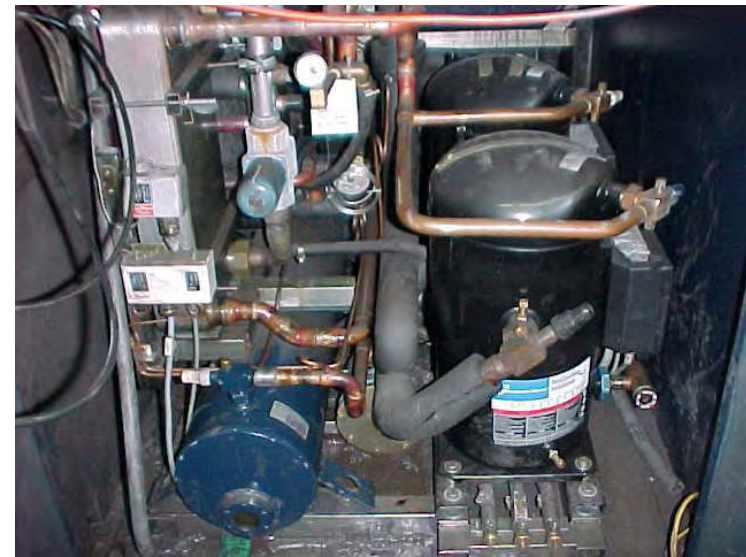
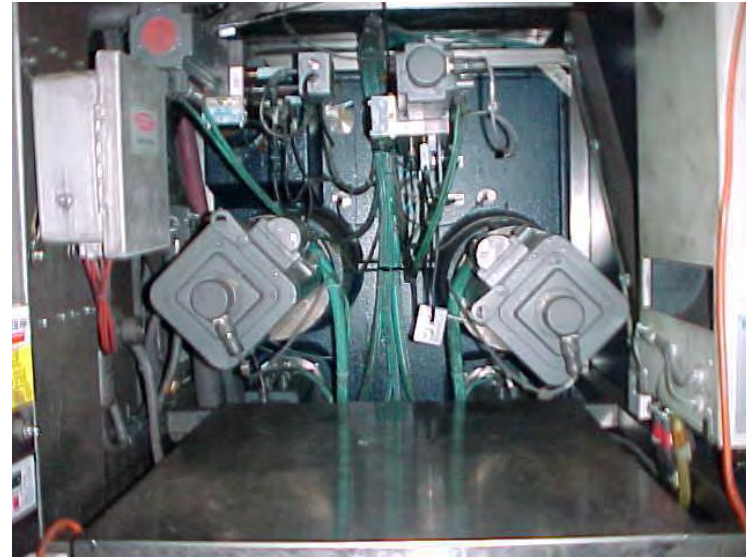


manuf.	model	serial number	manuf. date	roller diameter (mm)	roller pitch	wafer thickness (um)	wire thk (um)	ingot positions	ingot length (mm)	ingot diameter (mm)	slurry kettle/c ap. (l)	Voltage VAC	power Amps
HCT	E500SD	DX05	2001	300	0.015	200	140	4	500	1 - 200x200 2 - 150x150 4 - 125x125	300	480	315



Fab-Finder, Inc. We locate and provide the fab equipment you require

HCT WiresawE500SD-S #61





Spare parts, many new, slurry mix system



There are many spare parts with this system

Primary drive motor below was purchased and is new-\$20K

Extra slurry motor is new-\$9K

Two extra boxes of spares

PC boards, O-Rings etc.

Tool was running in Camarillo, transferred to Hillsboro, installed and run and met all OEM specs

Tool was de installed in 2008 when fab spec changed

Is in clean dry storage and available immediately





Spares-HCT WiresawE500SD-S #61

Item	Description	Vendor Item No.
1	TIGHTENING LAMELLA-RING, FR/RE	15699
2	O-RING, 110 X 7, FR/REAR WG	1194
3	O-RING, 79 X 7, FRONT & REAR W	7071
4	EC SOCKET, MIXER ONLY (WS 61)	18486
5	SUPPLY TUBE, REAR BOX (WS 61)	15739
6	MAINTENANCE KIT FOR SLURRY PU	12071
7	TEMPERATURE GAUGE, IECB 4 PINS	22371
8	ELASTIC SHOCK ABSORBER, TENSIO	9583
9	DETECTOR, PROXIMITY, NORMALLY	23150
10	PROXIMITY DETECTOR, NORMALLY O	673
11	NUT, STEEL FLAT BLIND, WINDER	13041
12	SAFETY SWITCH COMMAND KEY, L&R	P501
13	KEY, COMMAND, FOR WS61	4B776
14	SAFETY SWITCH, LEFT & RIGHT SI	5322
15	SAFETY SWITCH, RT HANDED CLOSI	3189
16	SAFETY SWITCH, L HANDED CLOSIN	1063
17	CABLE WITH EC PLUG, FOR MIXER	18622
18	DRIVE BELT, 1803MM (WS 61)	16762
19	REAR WG ROLLER BEARING BOX, W	G110.058
20	FRONT WIRE GUIDE ROLLER BEARIN	G100.067
21	WINDER 1 CLAMPING SCREW, 500/6	19387
22	TABLE GEAR BOX (WS 51,52 & 61)	4945

23	TENSION ARM BELLOW (WS 61)	9866
24	SENSOR, TENSION ARM (WS 61)	8958
25	TRAVERSE PULLEY SHAFT SEAL, 30	9107
26	SCREW, WG ROLLER TIGHTENING,	16898
27	TORQUE NUT, WIRE GUIDE ROLLER	16240
28	PIN, WIRE GUIDE ROLLER DOWEL PI	15471
29	SCRAPER, JACK ROD, 14/27X7MM (18701
30	HYDRAULIC, ORIENTABLE UNION, G	4110
31	INGOT HOLDER END COVER FOR GAS	18944
32	INGOT HOLDER (WS 61)	15766
33	DENSITY METER, PROMASS FLOWMET	4298
34	POWER SUPPLY CARD (WS 61)	13560
35	CARD, FOR AXIS COMMAND (WS 43,	10545
36	WINDER COUPLING (WS 61)	S040.051
37	TAKE-UP SPOOL, 250KM CAPACITY	S042.058
38	POWER AMPLIFIER, MAIN/SLAVE (16404
39	POWER MODULE, 80/160A, WINDER	5982
40	REGULATION MODULE, SLURRY (WS	5989
41	INSULATION TUBE FOR WINDER BOL	8047
42	INSULATION GASKET, WINDER BEAR	21451
43	INSULATION RING, WINDER	10896
44	O-RING, REAR ROLLER GUIDE	15674
45	NUT, PRECISION, FOR TABLE	769



SPECS-HCT WiresawE500SD-S #61

manuf.	model	serial number	manuf. date	roller diameter (mm)	roller pitch	wafer thickness (um)	wire thk (um)	ingot positions	ingot length (mm)	ingot diameter (mm)	slurry kettle/c ap. (l)	Voltage VAC	power Amps
HCT	E500SD	DX05	2001	300	0.015	200	140	4	500	1 - 200x200 2 - 150x150 4 - 125x125	300	480	315

air pressure (Bar)	air flow (m3/h)	supply water temp (C)	internal chiller unit	water flow (l/hr)	width (mm)	length (mm)	height (mm)	weight (kg)	Comments :	Comments
6	25	11	yes	45	2000	3785	2946	approx. 6500	Cybelec Operating System 2-37kW drive motors	250km take up spool